

For more information please contact us:

**Microplex Printware AG**  
Panzerstraße 5 - 26316 Varel

phone: +49 4451 91 37-0  
fax: +49 4451 91 37-49  
email: sales@microplex.de  
www.microplex.de

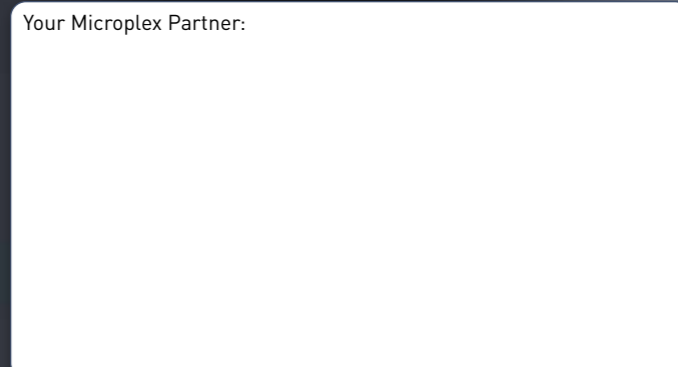
USA:

**Microplex Printware Corporation**  
30300 Solon Industrial Pkwy Suite E  
Solon, OH 44139  
phone: 440-374-2424  
fax: 440-374-2422  
email: info@microplex-usa.com  
www.microplex-usa.com



**PRINTING TECHNOLOGIES**  
ENGINEERED IN GERMANY

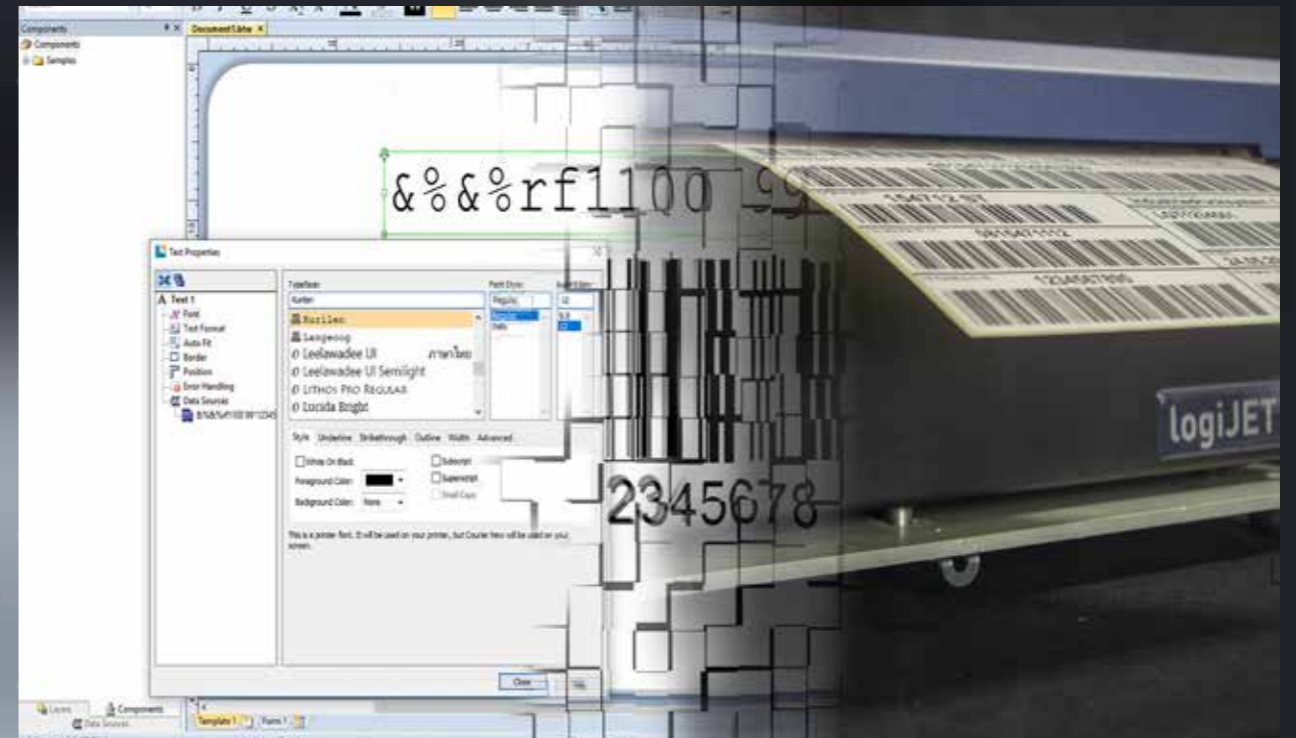
Your Microplex Partner:



The brand names referred to are the registered trademarks of the respective companies. All figures and details in italics and highlighted in colour are optional. Technical data is subject to change. The information contained in this specification sheet refers exclusively to the described details and not to warranted characteristics. No guarantee is assumed. The information do not exempt from the obligation for inspection of each respective individual case. Version 06.12.2019



# Printing with BarTender on Microplex Printers

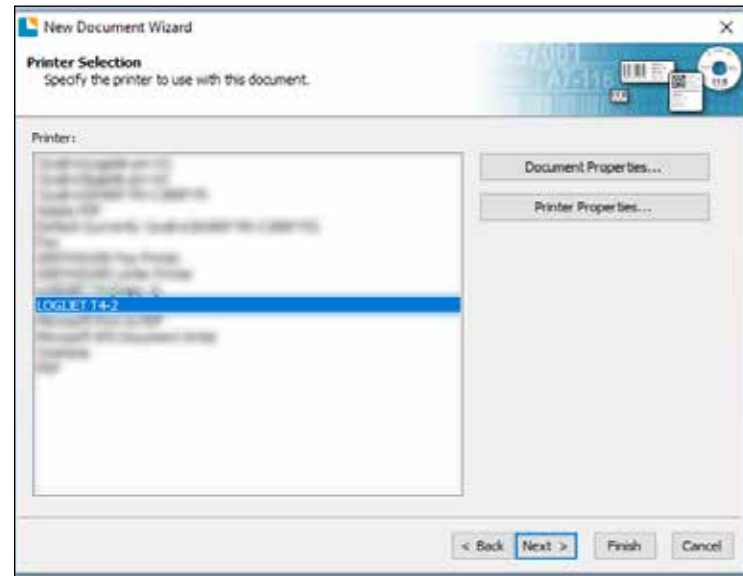


**MAXIMUM FLEXIBILITY  
FOR SEAMLESS LABEL PRINTING  
ON MICROPLEX THERMAL PRINTERS**

**Label Design, Migration, Setup, ...**



# MAXIMUM FLEXIBILITY FOR SEAMLESS LABEL PRINTING ON MICROPLEX THERMAL PRINTERS

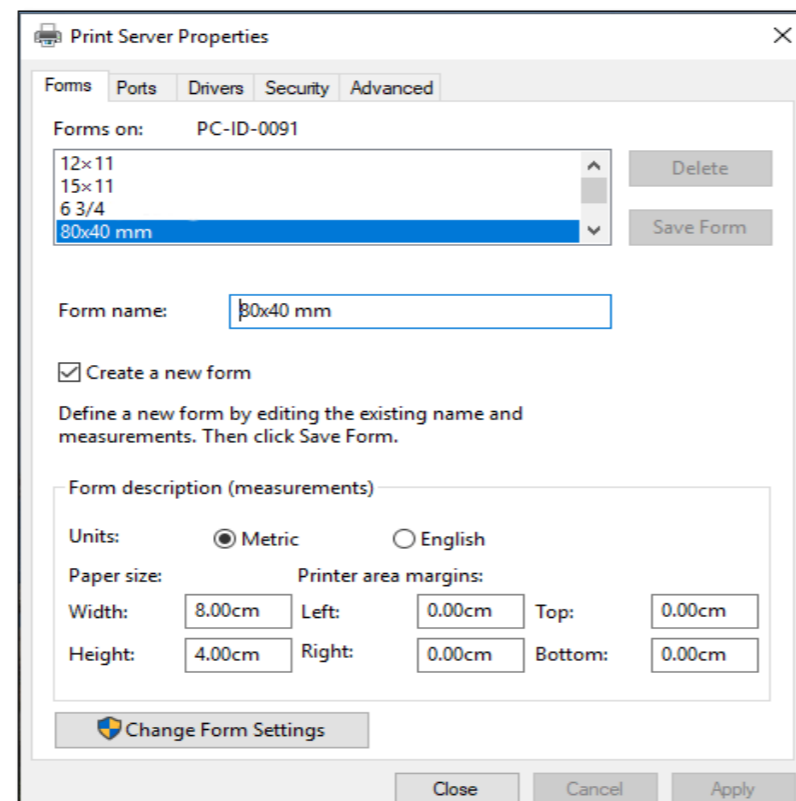


Printer selection for label design

## Barcode Label Printing with BarTender - Initial Setup with Microplex

The BarTender label software, together with Microplex printers, is ideal for the design and reliable printing of barcode labels. A Microplex printer is simply controlled via a Windows driver. This driver is installed on the Windows system and selected when initially creating a label. All label formats defined with this selected driver are immediately available for printing. It is not necessary to create these formats separately in the printer driver (print server properties).

In general BarTender creates the formats only for the printer for which a label was designed. **For other printers, these format definitions are not automatically adopted.**



Print server properties label form definition

## Continue to Use Existing Printer Driver with a Microplex Printer

The first scenario is to replace the existing printer that is being driven by a Windows driver with a Microplex printer. The Microplex printers understand over 40 different printer languages, therefore most likely you will want to use the printer language of your previous printer. If this is the case, simply enable the emulation on your Microplex printer. Then replace the previous printer. It is not necessary to redefine your formats for the Microplex printer.

## Replacement of an Existing Printer with a Microplex Printer while Preserving Existing Designs using a Microplex Windows Driver

If you want to use label designs with a Microplex printer that were created for your existing printer, a few precautions must be taken to ensure that the designs will still be printed as they currently are. Therefore it is important to check if the formats used are known to the Microplex printer so that they can still be used with the labels.

**This applies to printers of every manufacturer.**

## Create Paper Formats

Since BarTender creates formats only for the printer for which the label is defined, these formats are not automatically available to other printers. Missing formats can easily be created in the input mask in the print server properties of the printer to be used.

## Integration into SAP®

The printing of barcode labels from SAP is easy to implement with BarTender via integrated tools.

There are several possible approaches here.

1. The most powerful integration method is the **SAP All** (Auto-ID Infrastructure). It enables the automated label printing with BarTender. This requires the BarTender Enterprise Automation Edition.
2. The BarTender Automation Edition can handle iDoc files (with variable information and variable parameters). After recognition, the integration platform prints the appropriate BarTender document with the SAP variables.
3. It is also possible to use simple CSV type data with the BarTender integration platform. It contains details such as printer name, number of copies, etc. This also requires the Automation Edition from BarTender.

The BarTender integration platform acts as a middleware between SAP and BarTender. Further information on this middleware, installation and configuration can be found on the website [www.bartendersoftware.com](http://www.bartendersoftware.com)



## Coding of RFID Labels

With our RFID thermal printer models it is possible to encode UHF RFID labels. Both the EPC memory and the user memory can be programmed.

An RFID tag can also be encoded using BarTender. RFID programming can be initiated with IDOL commands. These commands are sent as a text field. For the text a built-in printer font has to be used.

For example, the IDOL command for writing RFID data looks like this:

```
&% &% rf 11 01 99 <DATA>
```

The data can be defined as a fixed text field or as a variable in BarTender. This RFID data can also be filled from a database.

The printer font can be selected within the text property screen of BarTender. A printer font for example is „Kurilen“. If you define an IDOL RFID command in a text field with a printer font, the printer interprets this as a command to execute and not as a text. The command will not be printed.

More information on RFID programming can be found within the IDOL programming manual or the user manual of the printer itself.

